

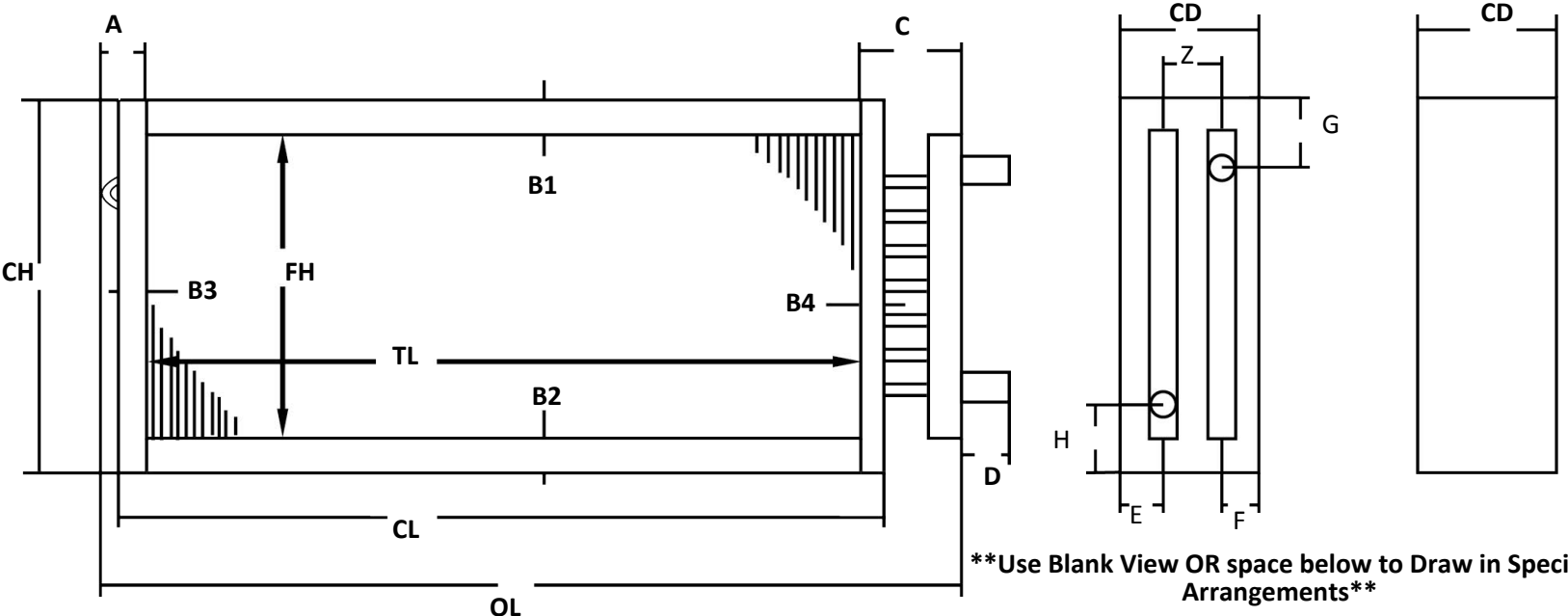
Name:	OEM Unit Model #
Company:	OEM Coil Model #
Phone:	Project:
Email:	Tag:

Condenser Coil

(800) 523-7590
 salessupport@coilcompany.com
 www.coilcompany.com



Coil Dimensions and Specifications: (Please include detail photos of the coils and header sections - if available)



Use Blank View OR space below to Draw in Special Arrangements

Header Material:
Copper

Connection Material:
Copper

Flange Type:

Non-Stacking

Stacking

Inverted Flange

***Casing Material: (Check One)**

Galv Steel 16 ga

Stainless Steel 16 ga

*Rows	*FPI	*FH	*TL	CH	CL	CD	OL	A	B1	B2	B3	B4	C	D	E	F	G	H	Z

* Asterisk = minimum required for price

Notes:

<p>* Fin Material:</p> <p>Aluminum (std)</p> <p>Copper</p> <p>Tonnage: _____</p>	<p>COPPER</p> <p>* TUBE O.D.</p> <p>TUBE Thick</p> <p>FIN Thick</p> <p><input type="checkbox"/> 3/8" .014 .005</p> <p><input type="checkbox"/> 1/2" .016 .006</p> <p><input type="checkbox"/> 5/8" .020 .006</p> <p>Other _____</p>	<p># Tubes high in single row of tubes</p> <p>_____</p> <p># Tubes connected to hot gas inlet header</p> <p>_____</p> <p># Tubes connected to liquid outlet</p> <p>_____</p>	<p>Liquid Outlet O.D.</p> <p>_____</p> <p>Hot Gas Inlet O.D.</p> <p>_____</p> <p>Refrigerant Type: (choose one)</p> <p>R-22 R-410A</p> <p>Other _____</p>
--	--	--	--